

Inserting a Record using Apex Data Loader

Inserting a Record using Apex Data Loader

Apex Data Loader is a client desktop application used to bulk import and export data. Using Apex data loader we can insert records 50,000 to 5,000,000 from CSV (Comma Separated Value) to [Salesforce](#).

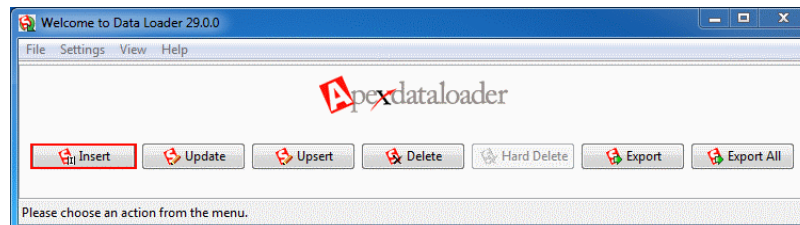
- [Learn how to install Salesforce Data loader in macOS and Windows Operating System.](#)

How to insert records using Apex Data Loader?

Before inserting records through Data Loader, we have to create a .CSV file and add fields in rows and columns as shown below.

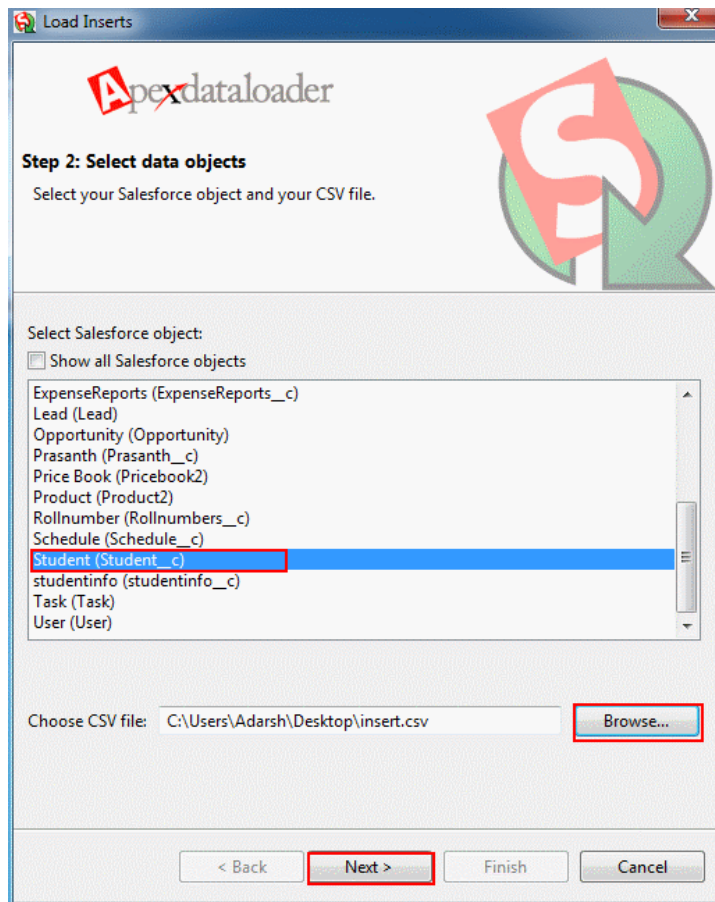
A	B	C	D	E	F
studentinfo name	course name	Fee paid	subjects1	subjects2	subjects3
Red	B.Tech	1000	57	68	89
Green	BSC	2000	56	84	82
Blue	BCOM	400	78	77	90
Black	B.A	300	79	90	96
Yellow	B.Pharmacy	400	99	89	70

Step 1 :- Go to Apex data loader and Click on Insert Button.

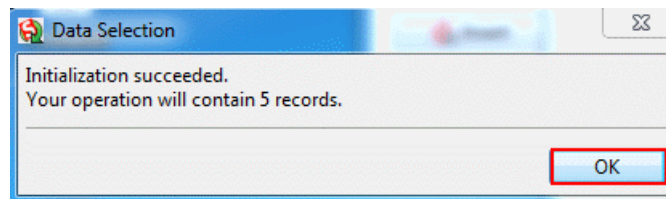


- Enter Username and Password to [login to Salesforce](#).
- Password is the combination of [password and Security token](#).
- Click on Login.

Step 2:- Selecting Object.



- Select the object from list.
- Now select CSV which we prepare earlier.
- Click on Next button as shown above.

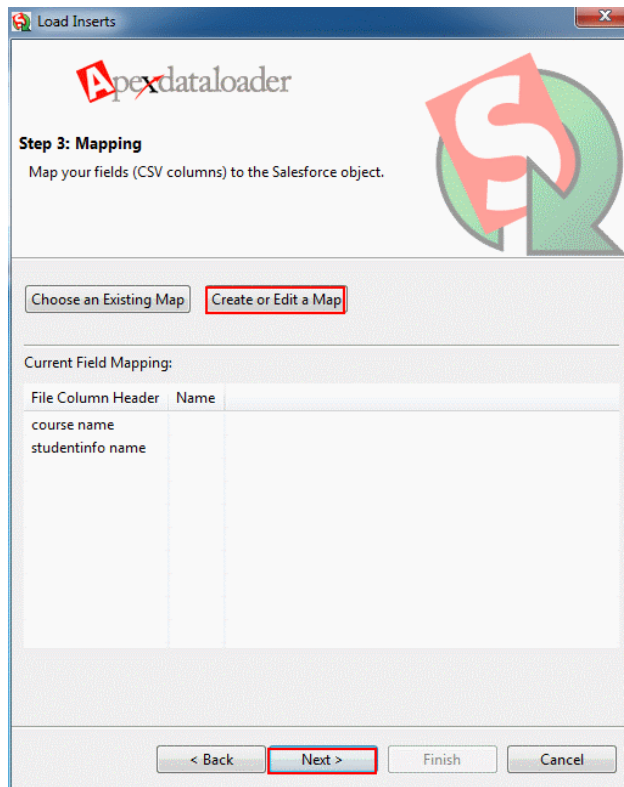


- Now a successful data selection message will be displayed.
- Click on Ok button to initialize Apex data loader insertion.

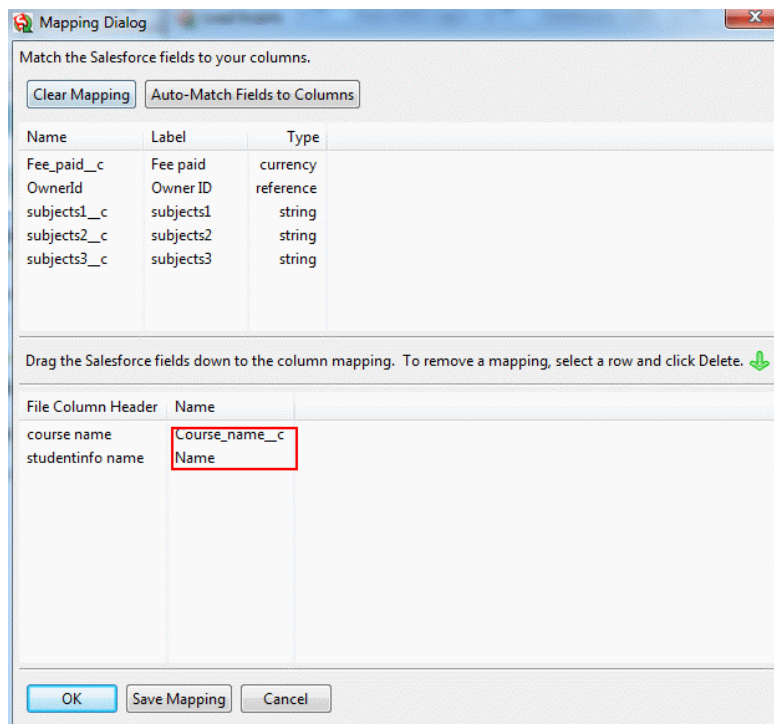
Step 3 :- Mapping (Creating or Editing a Map).

What is Mapping?

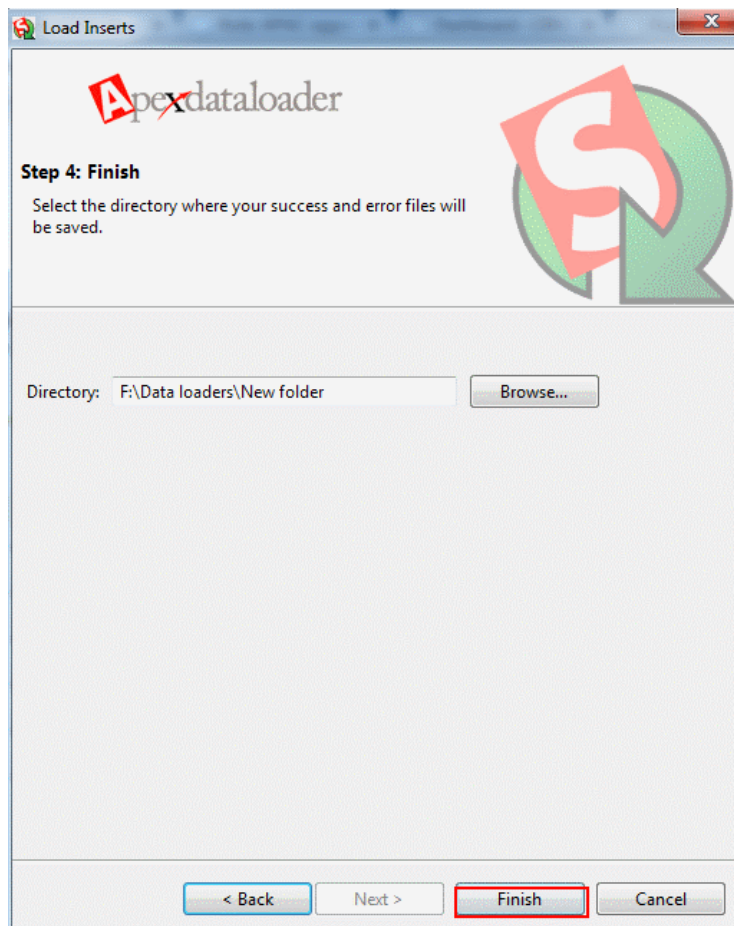
Mapping is the process of mapping CSV (Comma Separated Value) fields to the [object in Salesforce](#) account. Mapping can be done in two ways. Either by manually or Automatically.



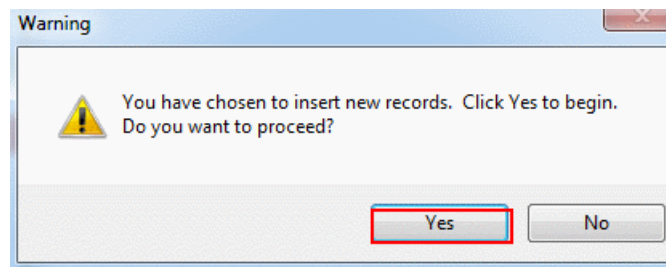
- Now select on Create or Edit a Map.
- Click on Next button.



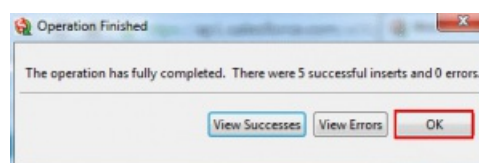
- Now drag the salesforce object field down to the column mapping.
- Now click on Ok button.
- When we click on Save Mapping, this mapping will be saved and can be used in future.



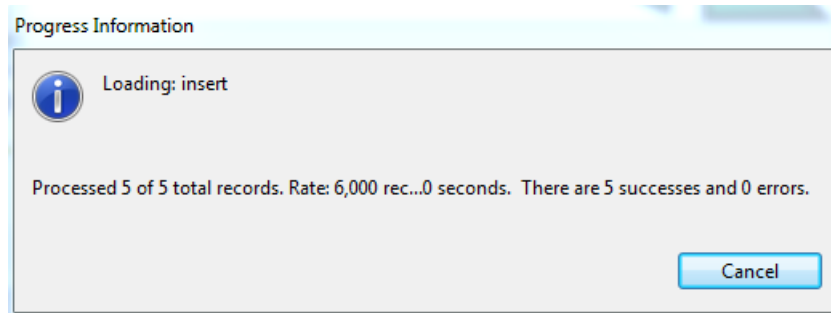
- Click on Finish button.



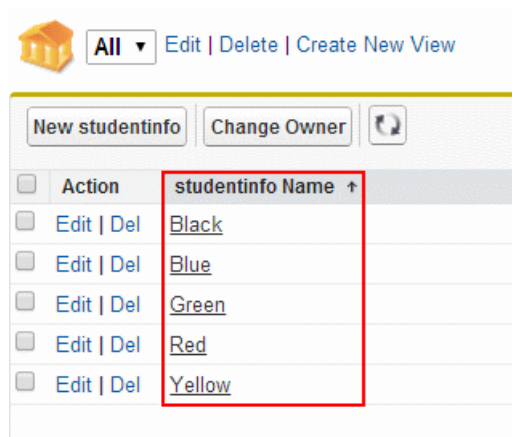
- A warning message will be displayed as shown above.
- Click on Yes button to insert records using apex data loader.



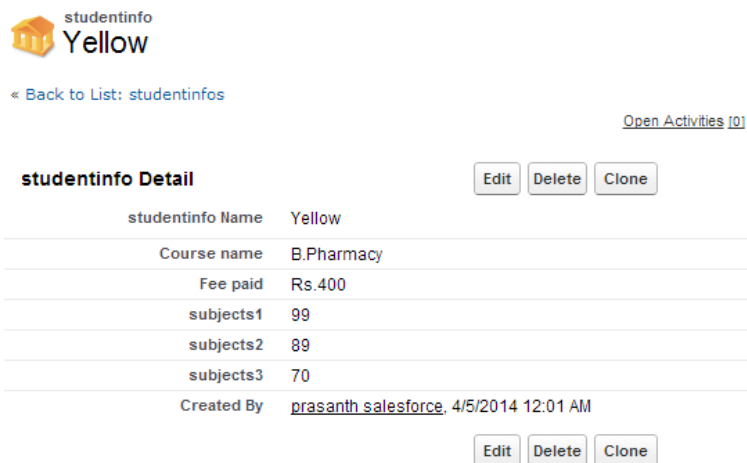
- As shown above a successful completed operation will be displayed.
- Click on Ok button.



- After clicking OK button we get progress information.
- As shown above we have inserted 5 records in custom object Studentinfo__c using Apex Data Loader.



Now click on Any of the record.



As shown above **Studentinfo__c** object fields like Course name, Fee paid, Subject1 marks, Subject2 Marks, Subject3 marks are successfully inserted using CSV file using Salesforce Data Loader.

Conclusion.

In this [Salesforce tutorial](#) we have learned about Inserting records using Apex Data Loader. In our next [Salesforce admin tutorial](#) we are going to learn about [Data loader UPSERT](#)(Update and Insert) operation.

Home : Salesforce Admin Tutorials

- [Salesforce Administration](#)

Section 1 : Getting Started

- [What is Salesforce.com](#)
- [What is login.Salesforce.com](#)
- [Enabling Caching and Automcomplete at Salesforce login](#)
- [Overview of ERP and CRM](#)
- [What is Cloud Computing](#)
- [Why Salesforce CRM is #1 on Demand](#)

Section 2 : Designing your Data Model

Section 3 : Building your Data Model

- [Understanding Salesforce.com application](#)
- [How to create an App in SFDC?](#)
- [How to create custom object in SFDC](#)
- [Creating fields using different field types in Salesforce.com](#)
- [Overview on Salesforce Object Relationships](#)
- [How to create Master Detail relationship in SFDC?](#)
- [Cannot create Master Detail Relationship?](#)
- [How to create Lookup relationship in salesforce.com?](#)
- [How to create Many to Many Relationship in Salesforce?](#)
- [What is Schema Builder](#)

Section 4 : Implementing Business Logics

- [What is a Formula Filed?](#)
- [What are Cross Object Formulas?](#)
- [What are Validation Rules?](#)
- [Roll up Summary Fields](#)
- [Field Dependencies](#)

Section 5 : Setting up User Interface

- [Page Types and Page Elements](#)
- [What are page Layouts?](#)
- [Home page layouts and components](#)
- [Why Documents are used in Salesforce](#)
- [List Views](#)

Section 6 : Customizing Standard Salesforce Application

- How to Customise Standard Salesforce application

Section 7 : Salesforce Security Model

- Overview on Salesforce security Model
- How to create New Users in SFDC?
- What is SAML?
- Public groups in Salesforce
- Role Hierarchies in Salesforce.com
- How to create and manage Profiles
- What is Field Level Security?
- How to use Permission Sets?
- Control Record visibility using Organisation wide Defaults
- Control Record visibility using Role Hierarchy
- Control Record visibility using Sharing Rules
- What are Record Types and how can we configure
- What are Page Types and page Elements

Section 8 : Data Management

- Different Data Management Tools
- How to install Apex Data Loader in macOS and Windows
- How to Insert a record using Apex Data Loader
- How to Update and Insert records Apex Data Loader
- How to Delete and Export records Apex Data Loader

Section 9 : Salesforce.com Audit

- Field History Tracking
- Setup Audit Trail

Section 10 : Automate Business Process

- How to create New Email Template in Salesforce
- Salesforce Workflow Rules Overview
- Creating Workflow rules with Rule Criteria & Workflow actions
- Configuring Approval Process
- Assignment rules for Leads and Cases

Section 11 : Reports and Dashboards

- What is a report in Salesforce and how we create them?

↳ Salesforce Reports and Dashboards Overview

↳ How to use report builder?

↳ How to create Summary reports?

↳ How to create matrix reports?

↳ How to create salesforce Dashboard, Different Dashboard Components, Customizing Dashboard Components, How to create Dynamic Dashboard in Salesforce, Deleting and Printing Salesforce Dashboards

↳ Creating Dashboards with Dashboard Components for Tabular and Joined Reports

Section 12 : Salesforce Service Cloud

↳ Overview on Salesforce Service Cloud

Section 13 : Portal and Sites

Section 14 : AppExchange

↳ What is Salesforce AppExchange.

Section 15 : Managing Sandboxes

↳ What is Salesforce Sandbox?.

↳ Different Sandboxes and Sandbox Environment Types.

↳ How to create Salesforce Sandbox template?.

↳ How to create Salesforce Sandbox?

↳ How to login Salesforce Sandbox?

Section 16 : Salesforce lightning

↳ How to create Salesforce custom domain?

↳ What is Salesforce lightning Experience?

↳ What is Salesforce lightning component Framework?

↳ Creating first Salesforce lightning App

↳ Styling Salesforce lightning App

↳ Lightning Componnet : aura:attribute tag

↳ What is Salesforce DX?

↳ Create Salesorforce DX project

↳ Salesforce Dev Hub Setup step-by-step

↳ Creating Sratch Org