

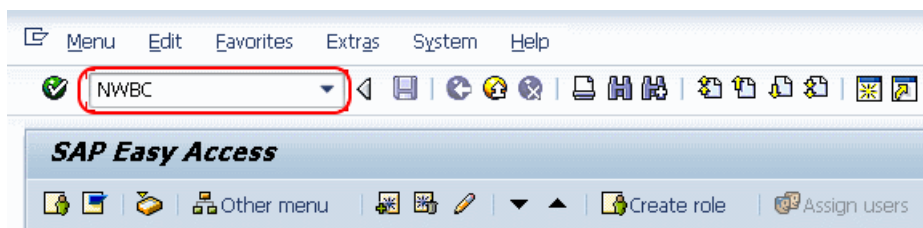
# SAP GRC – Create Rule Sets

## How to Create Rule Sets in SAP GRC

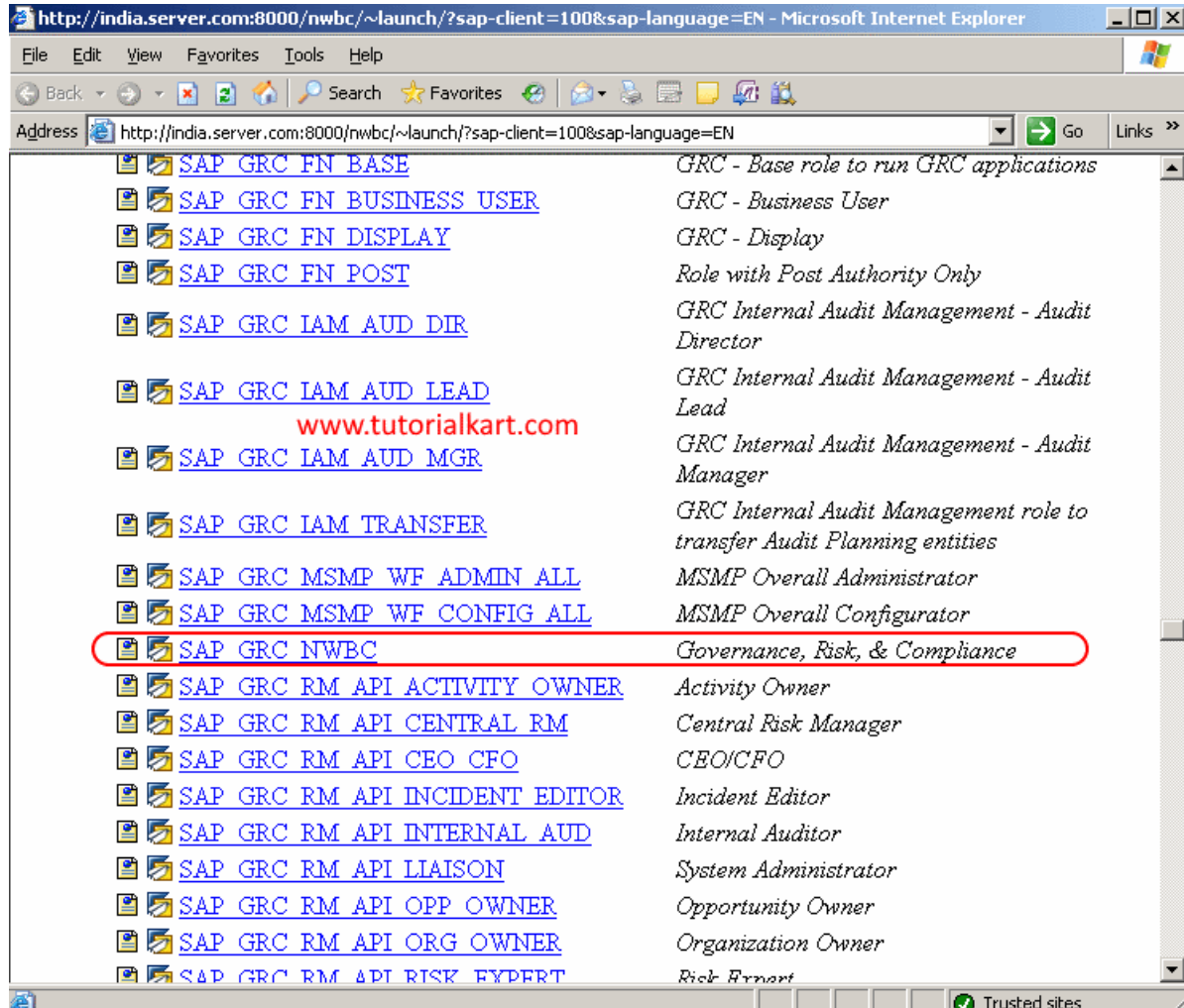
In this tutorials, we will create rule sets (rule id) in SAP GRC step by step using transaction code NWBC and menu path.

- **Transaction code:** NWBC
- **Path:** NWBC > SAP\_GRC\_NWBC > Rule Setup > Access Rule Setup > Rule Sets

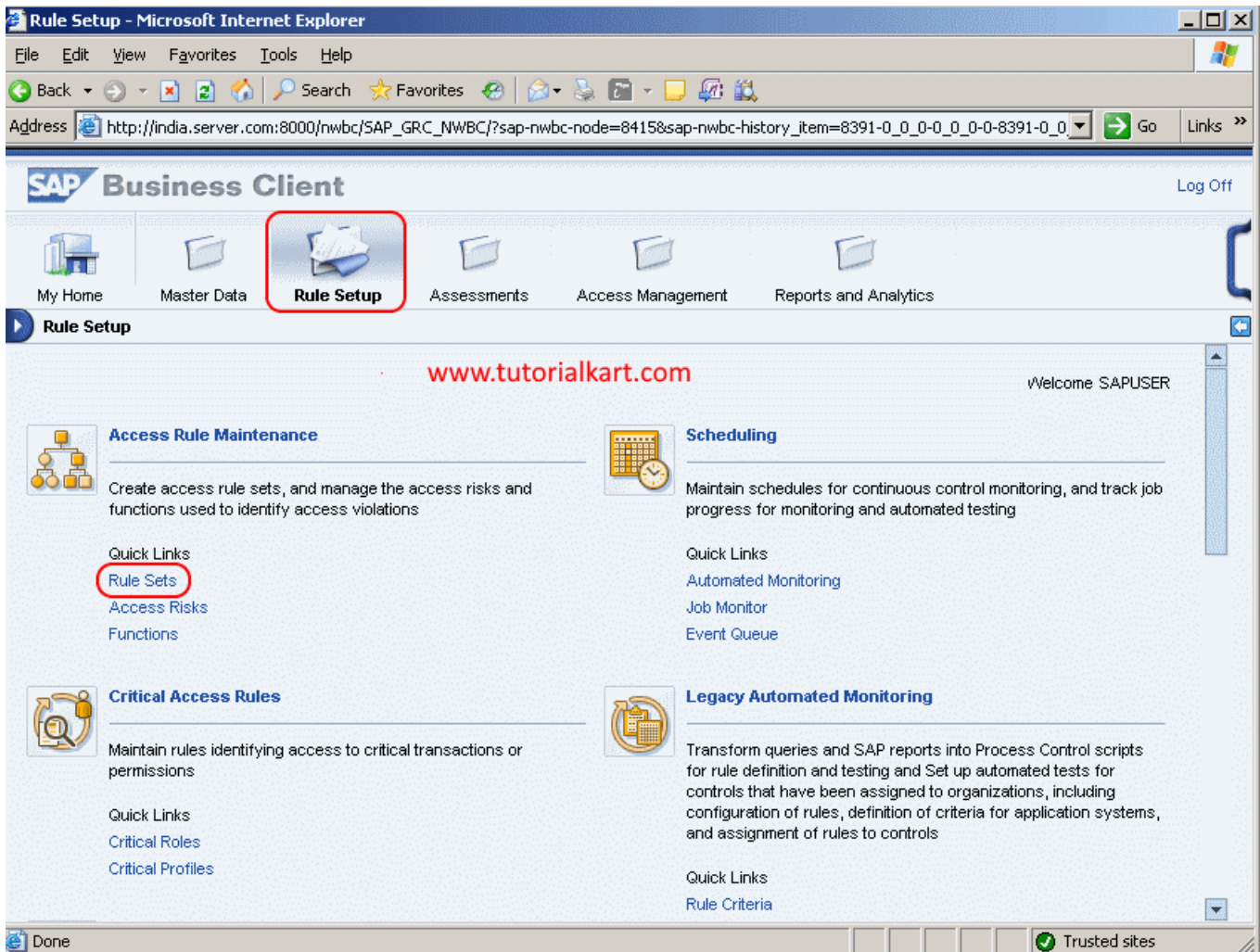
**Step 1:** Execute the [SAP tcode](#) “NWBC” in the SAP command field.



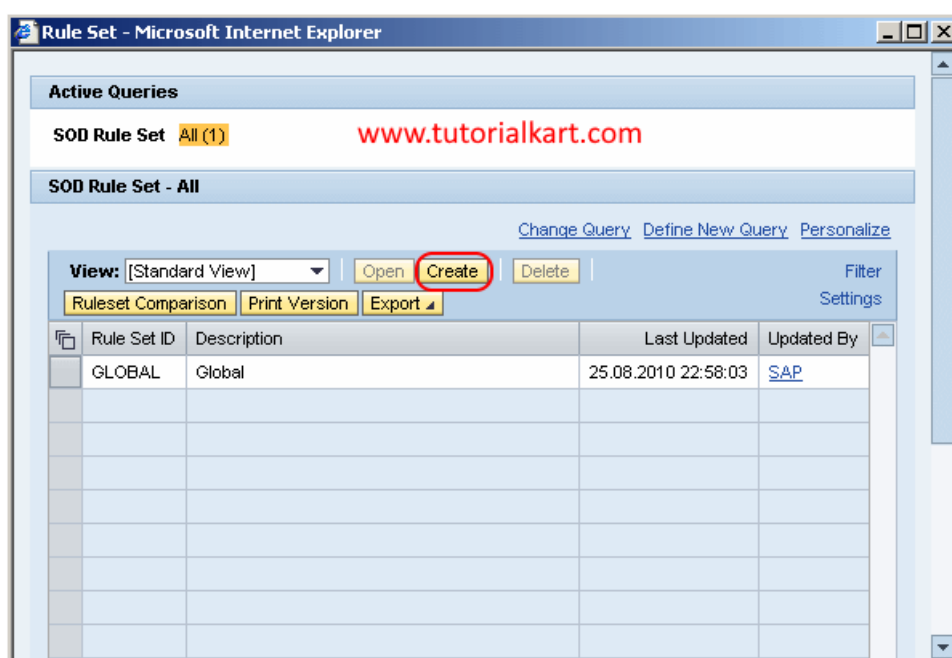
**Step 2:** Now the Netweaver Business Client launches on web browsers. Choose the SAP\_GRC\_NWBC (Governance, Risk and Compliance) from the list by double click on it.



**Step 3:** In the next screen SAP Business client, choose “Rule Setup” and click on “Rule Sets” which is under Access Rule Maintenance.

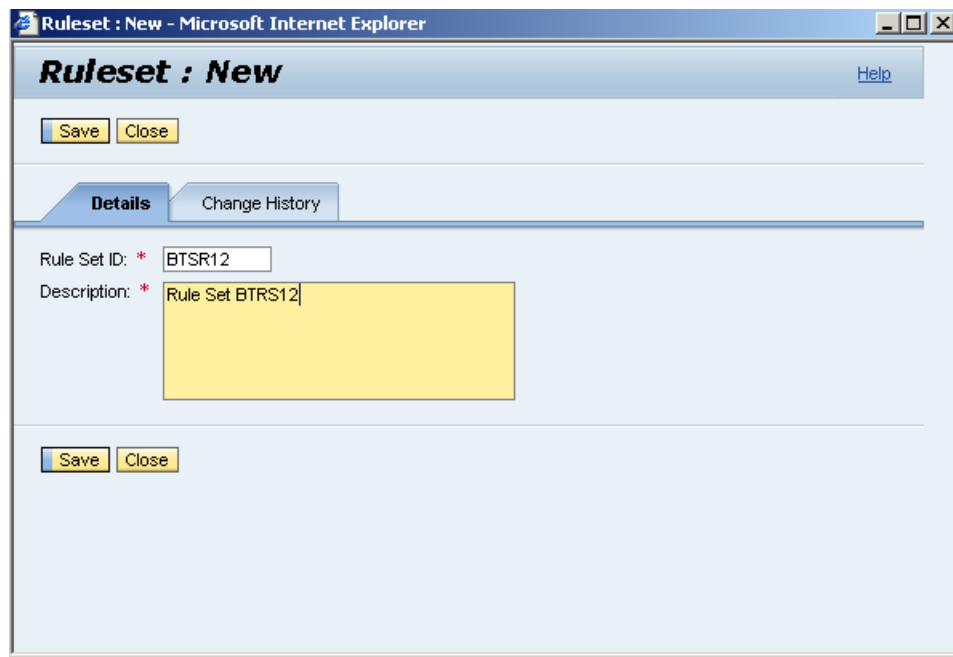


**Step 4:** A new browser Rule Set opens in a new window, click on create.



**Step 5:** In the next screen RuleSet: new, enter the following details.

- Rule set id: Enter the new rule set id
- Description: Update the description of rule set
- After maintaining the details, choose save icon and save the configured details.



Successfully we have created rule sets in SAP GRC.

## SAP GRC

↳ [Home - SAP GRC Tutorial](#)

## SAP GRC - Post Installation

↳ [SAP GRC - Configure & Test RFC Connection](#)

↳ [SAP GRC - Activate applications in Client](#)

↳ [SAP GRC - Activate ICF Services](#)

↳ [SAP GRC - Perform automatic workflow](#)

## SAP GRC - Basic configuration

↳ [SAP GRC - Maintain business configuration](#)

↳ [SAP GRC - Activate BC sets](#)

↳ [SAP GRC - Maintain connectors to connection type](#)

↳ [SAP GRC - Maintain connector settings](#)

↳ [SAP GRC - Maintain connection settings](#)

↳ [SAP GRC - Maintain mapping for actions](#)

## SAP GRC - Access Risk Analysis

↳ [SAP GRC - Create rule sets](#)

↳ [SAP GRC - Create functions](#)

‡ SAP GRC - Create access risks

‡ SAP GRC - Download SOD rules

‡ SAP GRC - Run user risk analysis

‡ SAP GRC - Execute batch risk analysis

‡ SAP GRC - Create Mitigating Owner

‡ SAP GRC - Create Mitigating Monitor

‡ SAP GRC - Assign Mitigating Owner & Mitigating monitor in access control owners

‡ SAP GRC - Create organizational structure hierarchy

‡ SAP GRC - Define mitigating control id

‡ SAP GRC - Activate Workflow

## SAP GRC - Emergency Access Management

‡ SAP GRC - Maintain configuration settings

‡ SAP GRC - Create FFID owner

‡ SAP GRC - Create FFID controller

‡ SAP GRC - Access control owners

‡ SAP GRC - Assign owners to FFID

‡ SAP GRC - Assign firefighter id to FFID

‡ SAP GRC - Assign FFID to controller

‡ SAP GRC - Create reason codes

‡ SAP GRC - Firefighter log synchronization

‡ SAP GRC - Execute FFID reports

## SAP GRC - Access Request Management

‡ SAP GRC - Create users for ARM

‡ SAP GRC - Maintain number range intervals for provisioning requests

‡ SAP GRC - Maintain provision settings

‡ SAP GRC - Define request type

‡ SAP GRC - Maintain MSMP Workflow

‡ SAP GRC - Access request